



Incorporating > Film Wellington > Creative HQ > Angel HQ  
> Education Wellington > Industry Development Centre

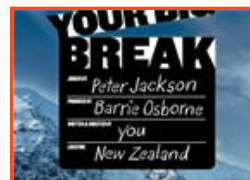
If you prefer, you may read this newsletter on our website.

## In this Issue

- ▶ [New Zealand set to star on the silver screen](#)
- ▶ [Commercialise ideas for a global marketplace](#)
- ▶ [A side-order of technology with your lunch?](#)
- ▶ [Need help solving a business problem?](#)
- ▶ [Wellington gardens in the artistic spotlight](#)

### New Zealand set to star on the silver screen

New Zealand will be the star of a new project that's offering aspiring film-makers the chance to get their work in front of director Peter Jackson.



Tourism New Zealand's 100% Pure New Zealand 'Your Big Break' competition will see five budding film-makers direct and produce their own three-minute short films on location in New Zealand. The finalists will be flown to New Zealand by Tourism New Zealand, where they will work with *The Lord of the Rings* producer Barrie Osborne and Wellington's world class Park Road Post Production facility.

The winning film will be selected by Peter Jackson, who will personally view the final five entries.

The competition opens on 9 December and anyone can enter. To enter the first round, aspiring directors must submit a screenplay and supporting content via the campaign's website. For more information, click [here](#)

### Commercialise ideas for a global marketplace

Learn the methods that every inventor needs to know to get their idea to market.

The second part of this two-part course is aimed at presenting ideas to decision-makers like a professional - learn what you need to get your idea over the line.

The second part of this valuable business course runs from 9am-12pm on Tuesday December 8.

For more information, click [here](#).

### A side-order of technology with your lunch?

Find out how to get the most out of 'cloud computing' - whether you're new to the game or an old hand wondering what it means to you.



This free lunchtime workshop is part of the Xero Summer Seminar Series and is aimed at demystifying cloud computing by explaining acronyms, shooting down marketing speak and using plain English. All technology-minded Wellingtonians are welcome to come along to ask questions, challenge assumptions, be nourished and connect to the innovative Wellington companies and the next generation of Wellington's ICT talent.

Join us for lunch on Monday 7 December at 12.15pm. For more information, click [here](#)

### Need help solving a business problem?

Need help solving a business problem?  
Global Expert is ready to help New Zealand companies



solve their technical or market-related challenges and get ahead in this tough economic climate.

We recognise the need for New Zealand companies to quickly connect with local experts and have formally launched our New Zealand Linkages search for \$495 + GST. Our international search price has been reduced to \$1995 + GST (a \$1500 saving). Global Expert offers fast, confidential introductions to national and international experts to validate new technologies, assess market opportunities, find new suppliers or locate experts to solve technical problems and guide product and process development. All Global Expert clients are eligible to apply for funding of up to 50% of the expert's fees for qualified research and development projects – through the TechNZ programme.

So if you want to build more competitive products, shorten time to market, reduce costs, and improve decision making, contact Derrick Russell, Global Expert Specialist or click [here](#)

---

### Wellington gardens in the artistic spotlight

Leading New Zealand artist Karl Maughan will open an exhibition of his landscape paintings at Wellington's PageBlackieGallery on Tuesday 8 December.

For this series, the well-known artist again brings the outside in - but this time he's focusing on Wellington's gardens.

Come along to the opening, meet the artist and hear him talk about his work.

For more information, click [here](#)

---



Level 5, 50 Manners Street  
Wellington, New Zealand  
**+64-4-382 0099**  
[info@growwellington.co.nz](mailto:info@growwellington.co.nz)

If you no longer wish to receive these emails you may [instantly unsubscribe](#), but we'll be sorry to see you go.

You can [sign up again at any time through our sign up form](#).

Newsletter was sent using [Shoutpoint](#).